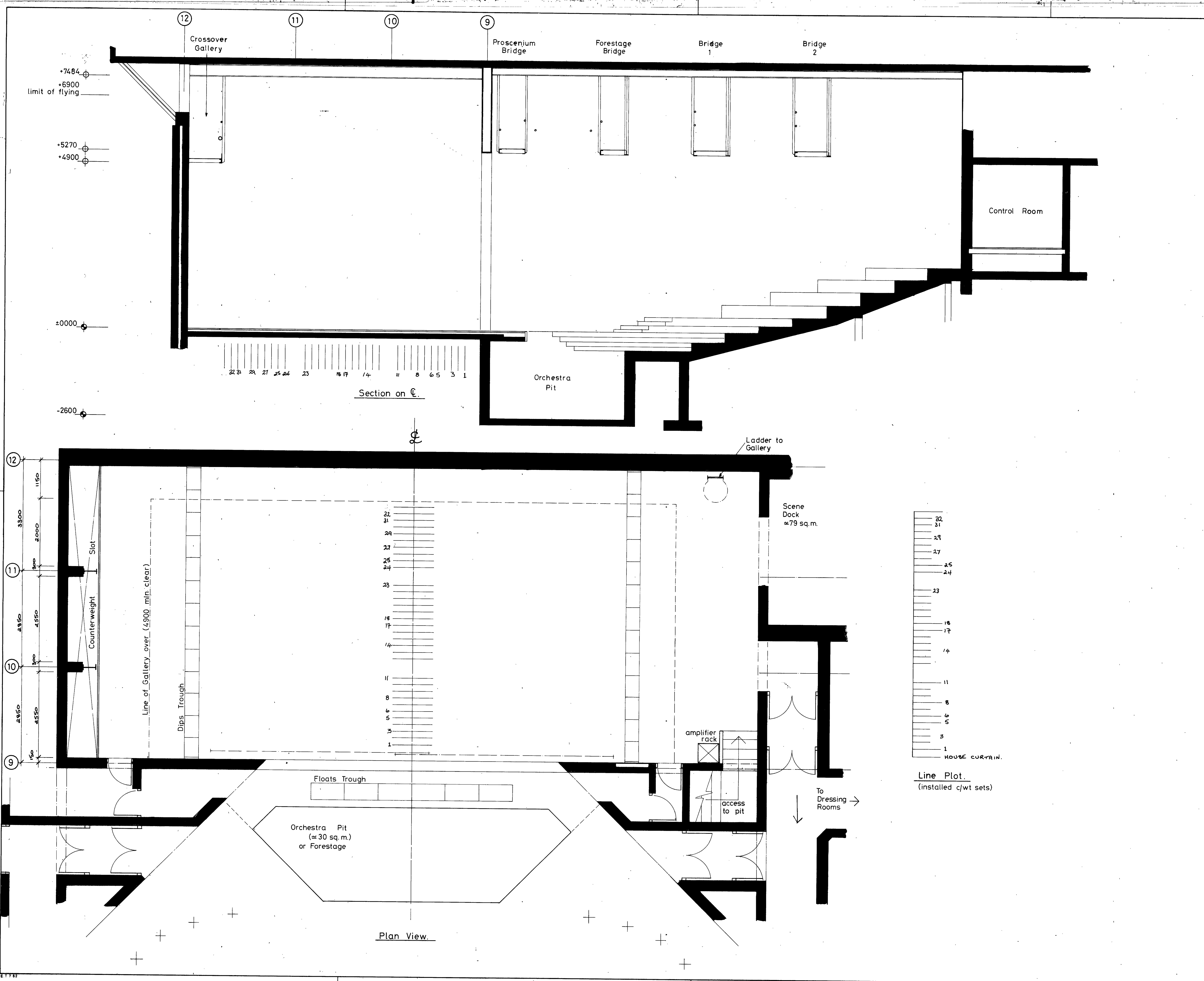


ARDHOWEN-STAGE PLAN LIGHTING



PROJECT
**ENNISKILLEN:
 THE ARDHOWEN THEATRE**

ARCHITECTS
McCormick, Tracey, Mullarkey.

NOTES

CRITICAL DIMENSIONS.

Proscenium 8600 wide x 5270 high.

Stage Depth 8470 from Tab line.
 8620 from stage face of Pros.
 1400 from stage face of Pros. to permanent stage edge.
 Fill-in rostrums in Orchestra Pit extend Forestage an additional 2800 beyond permanent stage edge.

Stage Width 5900 C/line to St. Left.
 4900 C/line to St. Right.

Height 4900 under Galleries.
 7484 under roof beams.
 545 stage riser.

DRAWING NUMBER
8329/032

REVISION
A

REVISIONS

C.P. 10/86.	2 NB COUNTERWEIGHTS ADDED. BARS 3 + 14.	
L.C. 4/86	REVISED IN LINE WITH SITE SURVEY.	A
by	date	revision letter

SCALE
1:50

drawn
L. CREANWOOD
 date
December 1985

JOHN WYCKHAM ASSOCIATES
 THEATRE CONSULTANTS
 119-121 HIGH STREET
 EPSOM SURREY KT19 8DT
 EPSOM 27911

TITLE
Stage Plan and Section.

DRAWING NUMBER
8329/032

REVISION
A